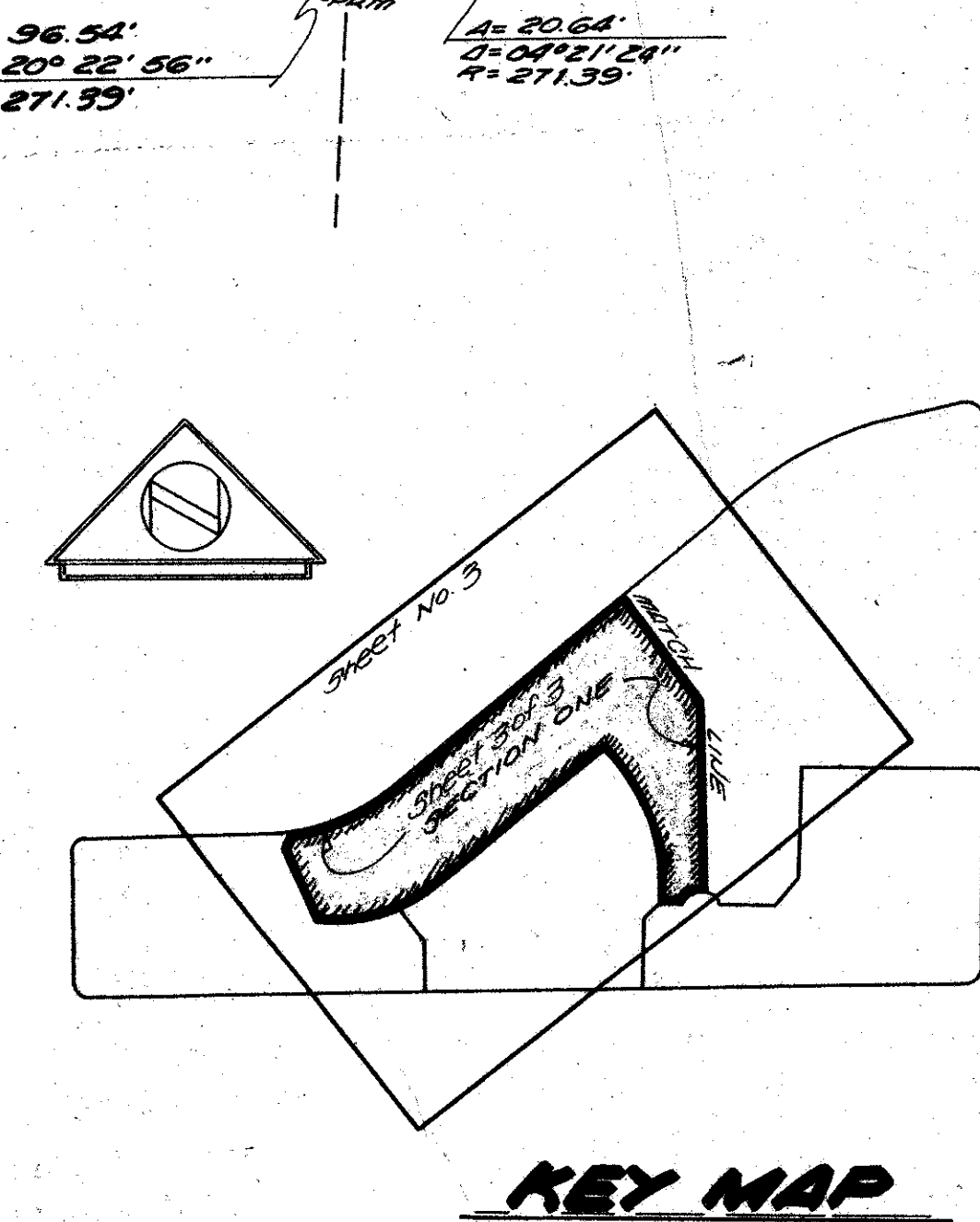
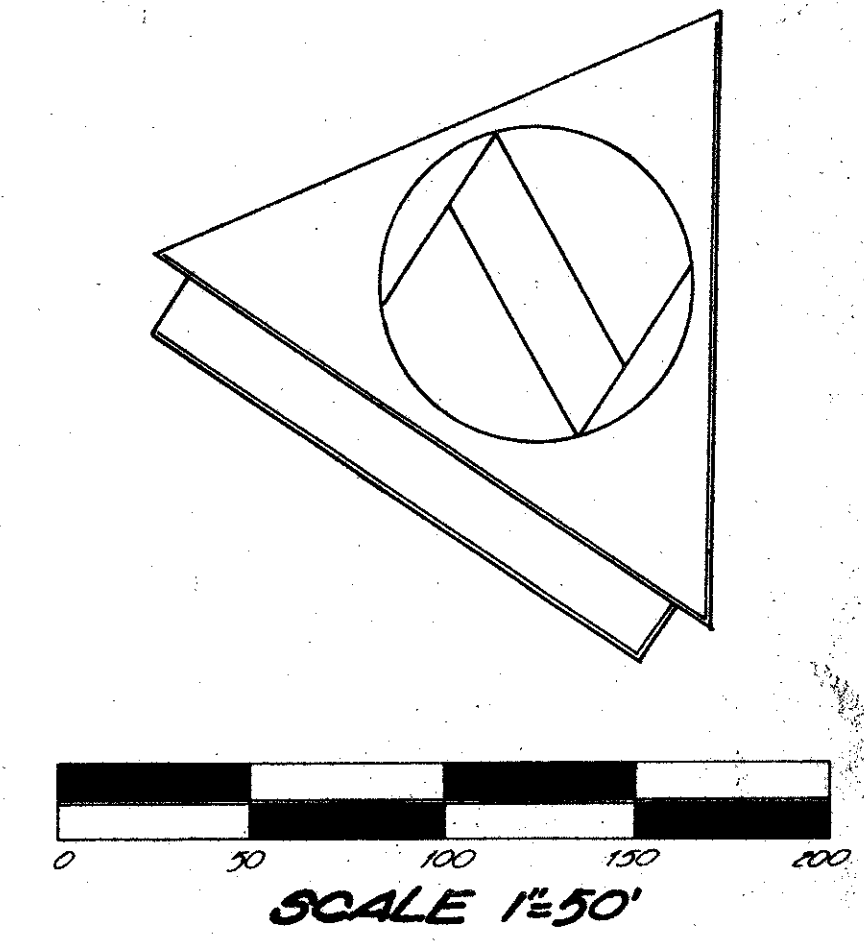
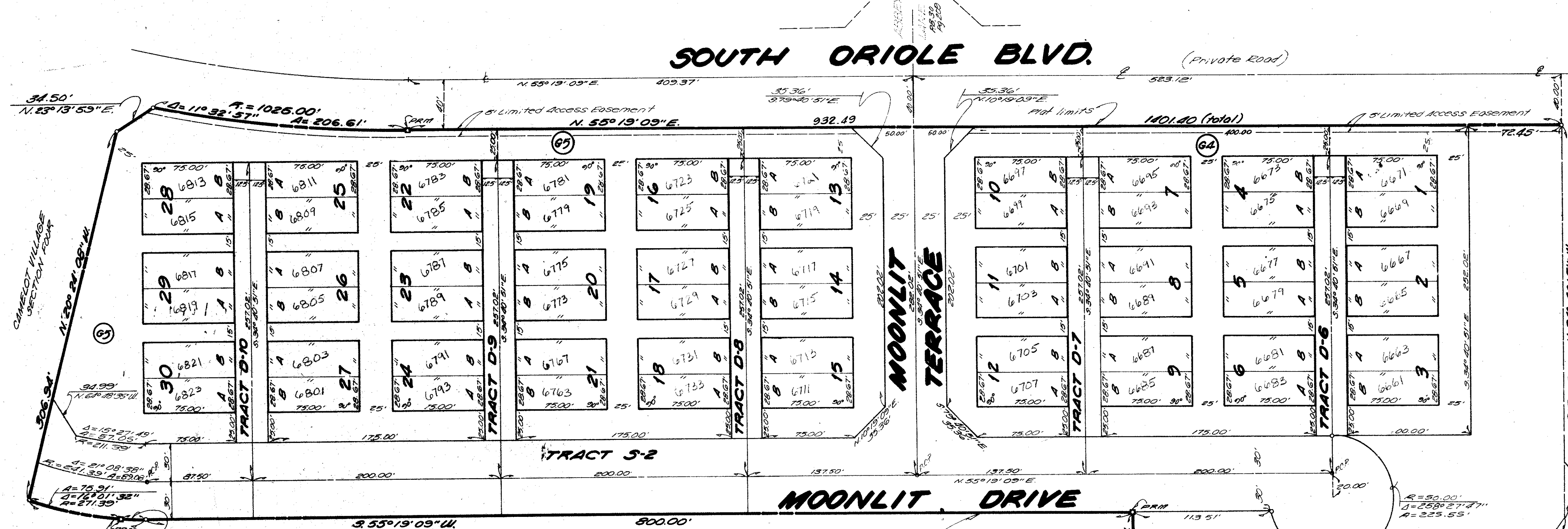


CAMELOT VILLAGE SECTION ONE VILLAGES OF ORIOLE (A PUD)

BEING A RESUBDIVISION OF A PORTION OF
TRACT 4
PLAT NO. 1 VILLAGES OF ORIOLE PB 30 PG. 38 39 AND 40
Section 15 Township 46 South Range 42 East
Palm Beach County Florida

This instrument prepared by: KEITH and SCHNARS
LAND SURVEYING SCIENCES, P.A.
Fort Lauderdale, Florida



CAMELOT VILLAGE VILLAGE OF ORIOLE (P.U.D.)

36

15/46/42
0326-316
32/166